

WHEN RECORDED RETURN TO:
WHITE BEAR ANKELE TANAKA & WALDRON
2154 East Commons Avenue, Suite 2000
Centennial, CO 80122

Mirabelle Metropolitan District No. 1
(In Douglas County, Colorado)

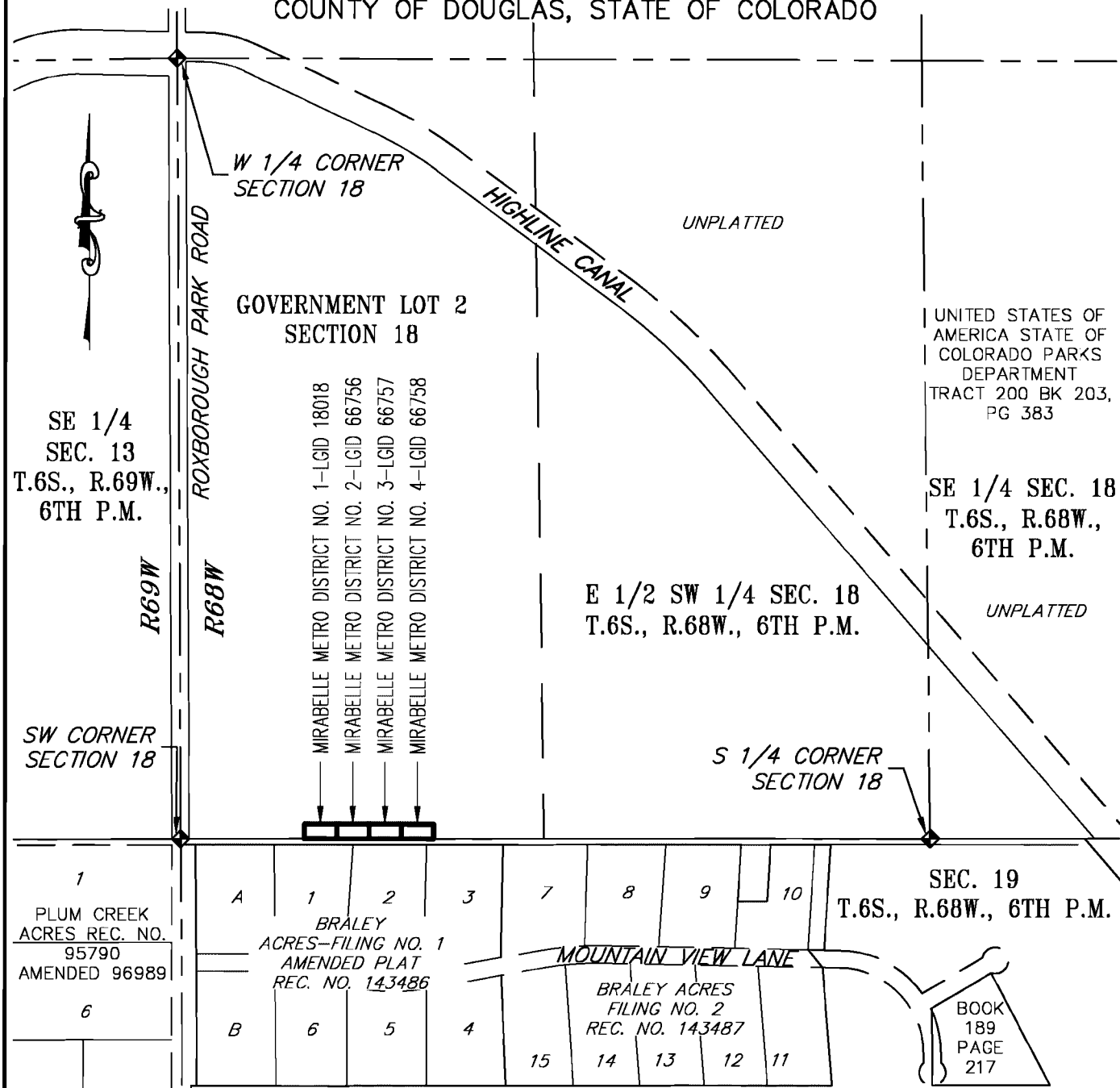
SPECIAL DISTRICT PUBLIC DISCLOSURE
Pursuant to § 32-1-104.8 C.R.S.

Name of District:	Mirabelle Metropolitan District No. 1 ("District")
Powers of the District:	All powers authorized in § 32-1-1004, C.R.S., including, but not limited to, fire protection, mosquito control, parks or recreational facilities or programs, traffic and safety controls, sanitation services, street improvements, television relay and translator facilities, transportation, water services, and solid waste disposal, subject to the limitations contained in the District's Service Plan.
Service Plan:	The District's Service Plan, which can be amended from time to time, includes a description of the District's powers and authority. A copy of the District's Service Plan is available from the Division of Local Government.
	Mirabelle Metropolitan District No. 1 is authorized by Title 32 of the Colorado Revised Statutes to use a number of methods to raise revenues for capital needs and general operations costs. These methods, subject to the limitations imposed by section 20 of Article X of the Colorado Constitution, include issuing debt, levying taxes, and imposing fees and charges. Information concerning directors, management, meetings, elections and current taxes are provided annually in the Notice to Electors described § 32-1-809(1), C.R.S., which can be found at the District office, on the District's web site, on file at the Division of Local Government in the State Department of Local Affairs, or on file at the office of the clerk and recorder of each county in which the special district is located.
District Boundaries:	A map of the District's boundaries is attached hereto as Exhibit A. Please note that the District's boundaries may change from time to time. Please contact the District for the latest information.
Disclosure Replaces and Supersedes Prior Disclosures:	Note that this disclosure document supersedes and replaces all prior disclosure recorded by the District, including, but not limited to, those recorded at Reception Nos. 2016002196 and 2016063282.

EXHIBIT A
District Boundary Map

MIRABELLE METROPOLITAN DISTRICT

A PORTION OF SECTION 18,
TOWNSHIP 6 SOUTH, RANGE 68 WEST OF THE SIXTH PRINCIPAL MERIDIAN,
COUNTY OF DOUGLAS, STATE OF COLORADO

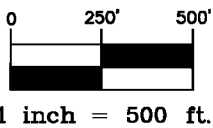


UNITED STATES OF AMERICA STATE OF COLORADO PARKS DEPARTMENT TRACT 200 BK 203, PG 383

SE 1/4 SEC. 18 T.6S., R.68W., 6TH P.M.

SEC. 19 T.6S., R.68W., 6TH P.M.

LAST REVISED 2017-06-05



AZTEC
CONSULTANTS, INC.

300 East Mineral Ave,
Suite 1
Littleton, Colorado 80122
Phone: (303)713-1898
Fax: (303)713-1897
www.aztecconsultants.com

JOB NUMBER: 121817-01

DISTRICT MAP
MIRABELLE METRO. DISTRICTS 1, 2, 3 & 4
DOUGLAS COUNTY, COLORADO

DATE: 2017-06-01

SHT 1 OF 1